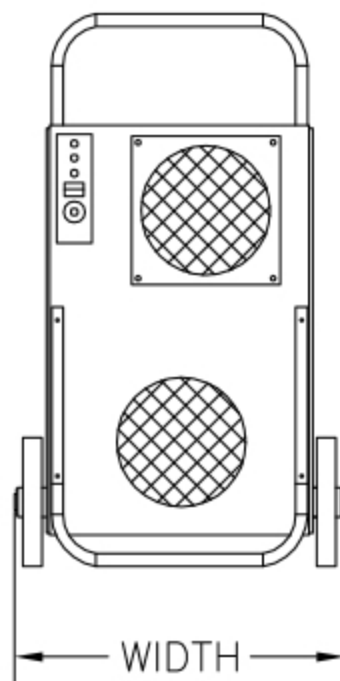
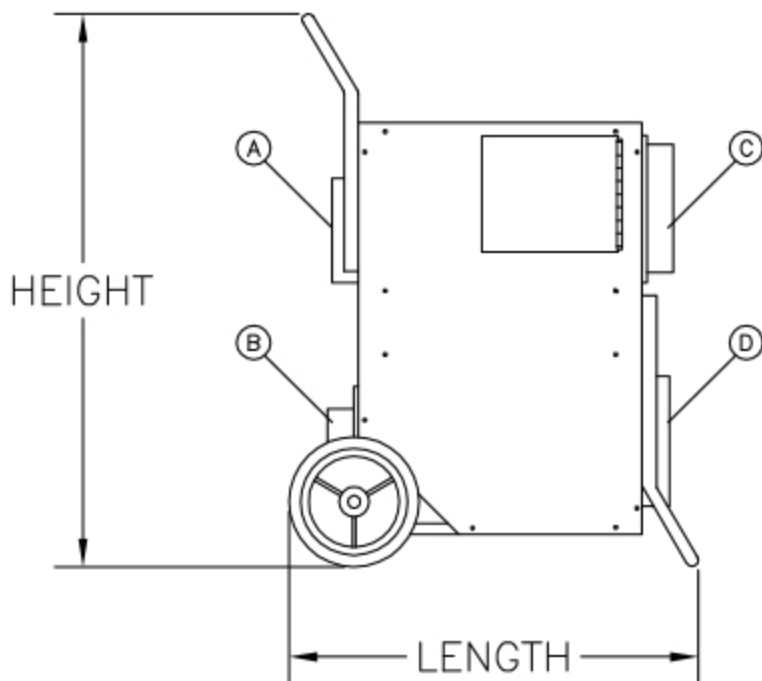


TWIN PORTS AERIAL



DULUTH, MN • (218) 728-4184

TD-600



UNIT SPECIFICATIONS:

POWER SUPPLY: 230V/1PH/60HZ/30A
AIR DELIVERY: 600 CFM @ .75 ESP
CAPACITY: 23+ GALLON/DAY @ 80°F/60% R.H.

- (A) REACT AIR EXHAUST 10"dia
- (B) REACT AIR INLET 10"dia
- (C) PROCESS AIR INLET 10"dia
- (D) PROCESS AIR OUTLET 10"dia

DIMENSIONS:

LENGTH: 32"
WIDTH: 26"
HEIGHT: 43"
WEIGHT: 140 lb

DRAWN: JT	UPDATED: JH
DATE: 06/01/10	DATE: 02/28/17