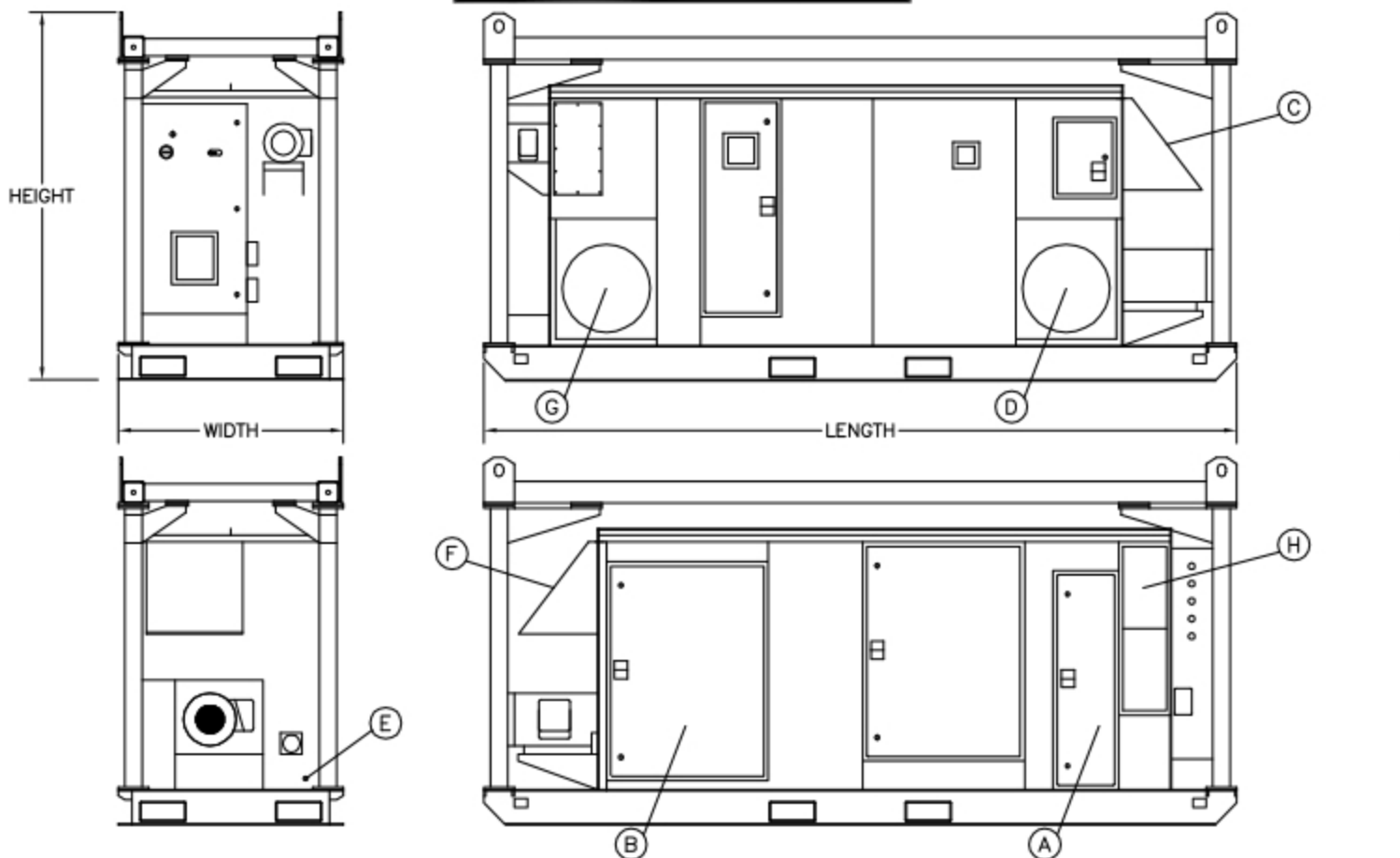


TWIN PORTS AERIAL



DULUTH, MN • (218) 728-4184

TD-5000E4G



UNIT SPECIFICATIONS:

POWER SUPPLY: 460V/3PH/60HZ

REGENERATION HEAT SOURCE:

ALL ELECTRIC: 175 MCA

HEAT ELEMENT: 100 KW

NATURAL/PROPANE: 30 MCA

SUPPLY PRESSURE: 7"-14" W.C.

BTU INPUT: 359 MBH

AIR DELIVERY: 5000 CFM @ 5.0" ESP

MOISTURE REMOVAL: 125lb PER HOUR (80°/60% R.H.)

DIMENSIONS:

LENGTH: 172"

WIDTH: 52"

HEIGHT: 84"

WEIGHT: 5150 lb

- (A) FILTER ACCESS, (3) 20x25
- (B) BURNER CONTROLS
- (C) REACTIVATION AIR INTAKE (20x20)
- (D) DRY AIR DISCHARGE (20" dia)
- (E) GAS HOOK UP (1" dia)
- (F) FILTER ACCESS
- (G) WET AIR INTAKE (20" dia)
- (H) REACTIVATION AIR DISCHARGE (8x18)

DRAWN: JT	UPDATED: JH
DATE: 04/04/07	DATE: 02/23/17