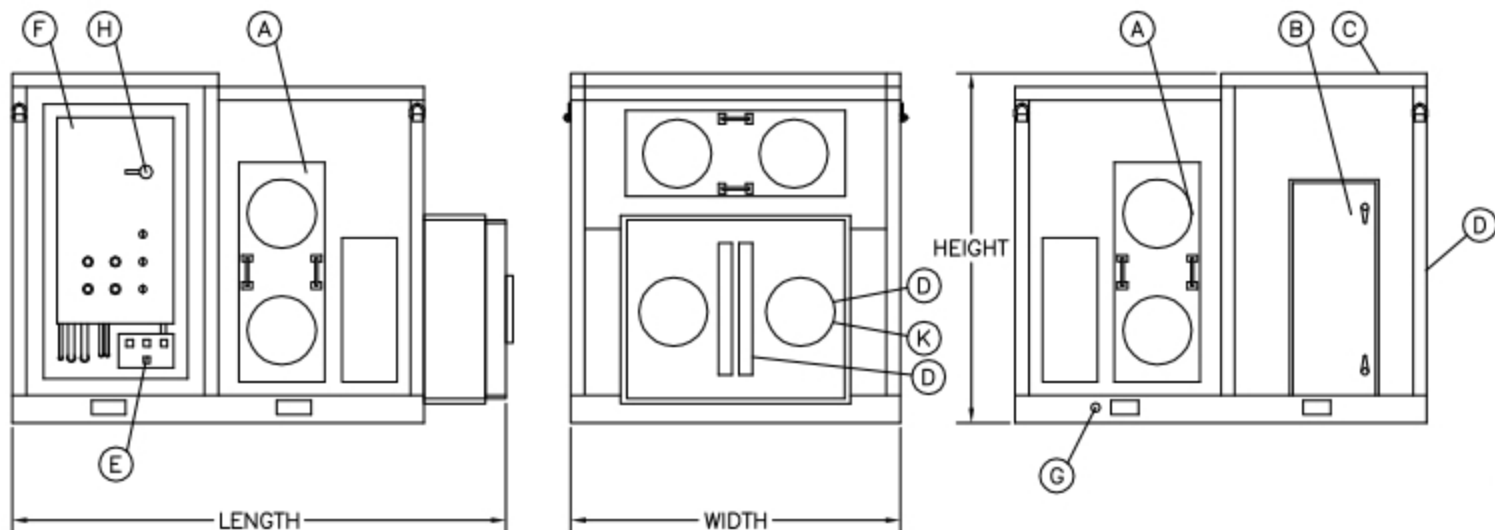


TWIN PORTS AERIAL



DULUTH, MN • (218) 728-4184

PAC-30R4



UNIT SPECIFICATIONS:

POWER SUPPLY: 460V/3PH/60HZ/80A
AIR DELIVERY: 9,000 CFM
MAX ESP (IN W.C.): 2.75 @ 9,000 CFM
DRAIN CONNECTION: 1" NPT

DIMENSIONS:

LENGTH: 144"
WIDTH: 96"
HEIGHT: 102"
WEIGHT: 7200 lb

- (A) SUPPLY AIR 20" dia
- (B) SERVICE ACCESS, COMPRESSOR
- (C) CONDENSER EXHAUST
- (D) CONDENSER INLET
- (E) CAM-LOC ELECTRICAL CONNECTION
- (F) SERVICE ACCESS, ELECTRICAL
- (G) CONDENSATE DRAIN CONNECTION
- (H) SAFETY DISCONNECT
- (J) RETURN AIR
- (K) SERVICE ACCESS, FILTER
- (L) MANUALLY ADJUSTABLE ECONOMIZER

DRAWN: ACJ	UPDATED: JH
DATE: 02/04/02	DATE: 02/17/17